



**SOUTHEAST  
ALASKA**  
TRANSPORTATION PLAN

# Southeast Conference Mid-Session Summit

Scenario Planning for Future  
Transportation Strategies  
February 12, 2026



# WORKSHOP PURPOSE AND GOALS



## Purpose

Gather input on future transportation strategies for Southeast Alaska to inform the SEATP Update.

## Goals

- Explore plausible futures – not predictions, but possibilities.
- Identify risks and opportunities for transportation systems.
- Engage interested parties for diverse perspectives to plan for a resilient transportation system for Southeast Alaska.





# AGENDA

- **Welcome & Overview (25 min)**
  - Purpose and status of SEATP Update
  - Overview of the scenario-planning approach and scenario topics
  - Introductions
- **Round 1 (40 min) - Participants choose Scenario A, B, or C, table**
  - Table discussions
  - Report-Out & Discussion: Each table shares its top three insights or priorities
- **Round 2 (40 min) - Participants choose Scenario A, B, or C, again**
  - Table discussions
  - Report-Out & Discussion: Each table shares its top three insights or priorities
- **Close & Next Steps (15 min)**
  - How participant input will inform SEATP Update
  - Upcoming SEATP events or key milestones



# OVERVIEW



## What is the Southeast Alaska Transportation Plan (SEATP)?

- The updated Southeast Alaska Transportation Plan will guide transportation improvements for the next 20 years. It looks at both travel between communities and local needs that affect the region.
- The plan covers all types of transportation - roads, ferries, airports, trails, to help direct future public investments.
- Area transportation plans identify community priorities and potential projects to meet those needs.
- These plans also help inform the Statewide Transportation Improvement Program (STIP), which funds transportation projects across Alaska.



# DOT&PF FAMILY OF PLANS



# WHAT THE PLAN CAN DO



## The SEATP Update Can:

- Set goals that guide Alaska DOT&PF's transportation investment priorities within the region
- Describe unique transportation characteristics, trends, and other factors that are projected to influence the needs of the region's transportation system over a 20-year planning horizon
- Identify and capture key transportation needs in all modes for community and agency use in advocating for, planning for, programming, and funding improvements.
- Recommend projects, programs, and policies of greatest regional significance and identify recommended funding and implementation strategies.

## The SEATP Update Cannot:

- Change future land use
- Change ferry, transit, or air service levels, schedules, or fares
- Change the posted speed limit on roads in the region
- Guarantee project funding
- Design projects
- Make decisions or set priorities for local or tribal transportation infrastructure

## What We've Done...

- ✓ Scope and schedule for the remainder of the plan confirmed
- ✓ Public Involvement Plan completed:
  - Website launched
  - Fact sheets and other engagement materials developed
- ✓ Existing Conditions Report published
- ✓ Population and economic updates advanced
- ✓ Public Meetings:
  - Two in-person (Ketchikan and Juneau), Two virtual
- ✓ Small Group Meetings & Conferences:
  - Southeast Conference Annual Meeting & Workshop
  - AML Conference
  - Tribal Engagement Meeting

## What's Up Next...

- Transportation System Analyses & Plan Alignment
  - Coordinate with AMHS Long-Range Plan, 10-Year Plan, Statewide LRTP, and other relevant plans
- Mid-Plan Updates
  - Southeast Conference Mid-Session Summit
  - Tribal & Community Meetings
  - Additional conference opportunities

# WHAT DID WE HEAR?



- Transportation Reliability and Connectivity
- Infrastructure – Maintenance and Resiliency
- Community and Tribal Engagement
- Environmental and Sustainability
- Safety and Accessibility
- Air and Ferry Service
- Active and Public Transportation
- Economy and Freight
- Lynn Canal Projects – Cascade Point and Chilkat Connector

## What are your top transportation priorities for your community?



The whiteboard contains the following handwritten notes:

- We should prioritize retaining FF and maintaining the safe - not on a road that serves as when mine (Nesqueam)
- maintain vessels place when needed  
NEW ROADS ARE NEEDED
- REESTABLISH POLICE Support Ferry Service (see below re PR is too short)
- Bus and paratransit to Adak Bay Ferry terminal supports at Adak Bay
- Bike paths not just bike lanes
- We can't get to a ferry terminal, either prior to us on maintenance of current (no new safety upgrades more guards!
- more Affordable Ferries  
Give a boost to Ballikam for in a small driver pickup
- Maintaining reg. out service
- This ↑
- IMPROVE + MAINTAIN ROAD SURFACE  
EG. MORE VISIBLE LANE MARKING
- Reliable ferry service
- January Lynn Canal Service
- Regular ferry service thru other regions include Yakutat
- Ditto Support reliable ferry system at Sitka, Yakutat, Ketchikan
- FERRY pickup! TERMINAL ONLY AT ADAK BAY (not Cascade)
- Predictable Ferry Service



# PROPOSED VISION STATEMENT

*An integrated land, air, and marine transportation system that provides safe and equitable access, fosters economic growth, provides efficient and cost-effective intermodal connections, and remains resilient and well-maintained.*





# PROPOSED GOALS



## **Safety and Accessibility:**

Provide safe and equitable access to transportation for all communities in Southeast Alaska



## **Economic Vitality:**

Support regional economic growth by enhancing transportation infrastructure and services that facilitate commerce and tourism.



## **System Reliability:**

Improve the reliability of air, marine, and land transportation systems to ensure consistent and dependable service.



## **Resilience and Preservation:**

Support a transportation system that remains resilient to hazards and is maintained in a state of good repair for long-term sustainability. .



## **Cost-Effective System:**

Strengthen intermodal connections between land, air, and marine modes to create an integrated and efficient transportation network.



# STEPS AND SCHEDULE

- **Defining Vision, Goals, and Objectives**
- **Data Verification and Analysis**
  - Economic and population forecast updates
  - Transportation system analyses
- **Issues and Needs**

- **Resiliency Analysis**
- **Needs Identification and Prioritization**
- **Implementation Strategies**
- **Developing Draft Plan**

- **Draft Plan-Out for Public Comment**
- **Final Plan Anticipated November 2026**

**Fall 2025 - Winter 2026**

**Spring - Summer 2026**

**Fall 2026**

- **Sharing Information and Seeking Feedback**  
Round 1 Outreach Meetings
  - Southeast Conference Annual Meeting
  - Community Meetings
  - Virtual Meetings

- **Sharing Information and Seeking Feedback**  
Round 2 Outreach Meetings
  - Southeast Conference Mid-Session Summit
  - Small Group Meetings

- **Sharing Information and Seeking Feedback**  
Round 3 Outreach Meetings
  - Southeast Conference Annual Meeting
  - Community Meetings
  - Virtual Meetings

★ **WE ARE HERE**

**Agency, Community, and Interested Party Involvement**  
Throughout Plan Update Process



# SCENARIO PLANNING



Scenario A – Weather Events



Scenario B – Funding



Scenario C – Population

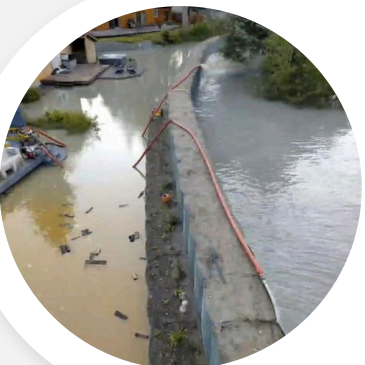


# SCENARIO A – WEATHER EVENTS



*The deadly landslide that crashed through the outskirts of Wrangell on the night of Nov. 20, 2023, is seen from the air on the following day.*

*-Photo provided by Alaska Department of Transportation and Public Facilities*



*Flooding from a release of water and snowmelt at Mendenhall Glacier covered some roads and threatened homes along the Mendenhall River in Juneau, Alaska on Wednesday, Aug. 13, 2025*

*- City and Borough of Juneau via AP*

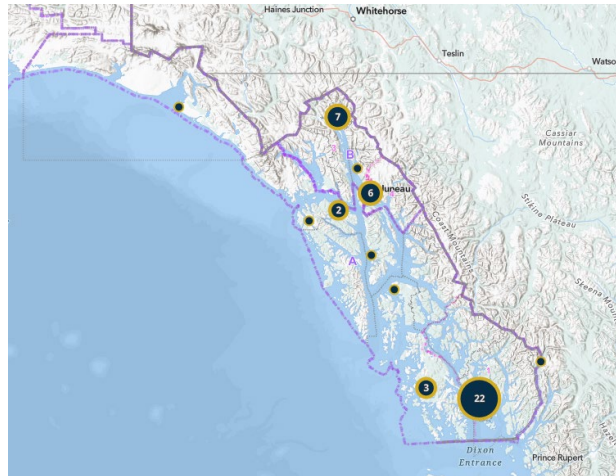


*Heavy snowfall is piled up on Main Street in the town of Haines, Alaska on Dec. 28, 2025.*

*-Courtesy Rachelle Galinski*



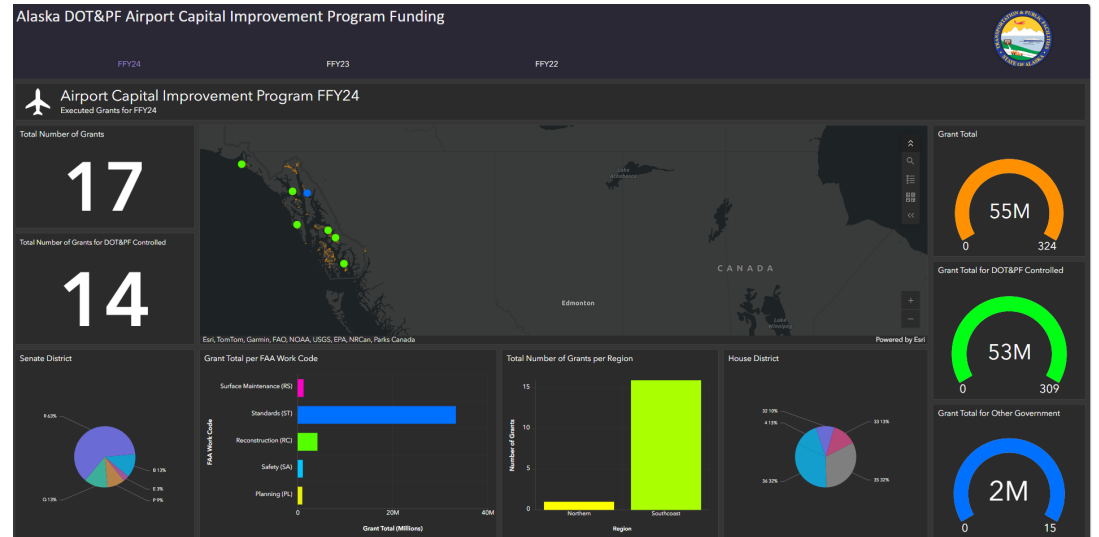
# SCENARIO B – FUNDING



Southeast Alaska STIP Amendment 2 Map



**Safe Streets & Roads for All Grant**  
It's time to go Big & Bold for Vision Zero

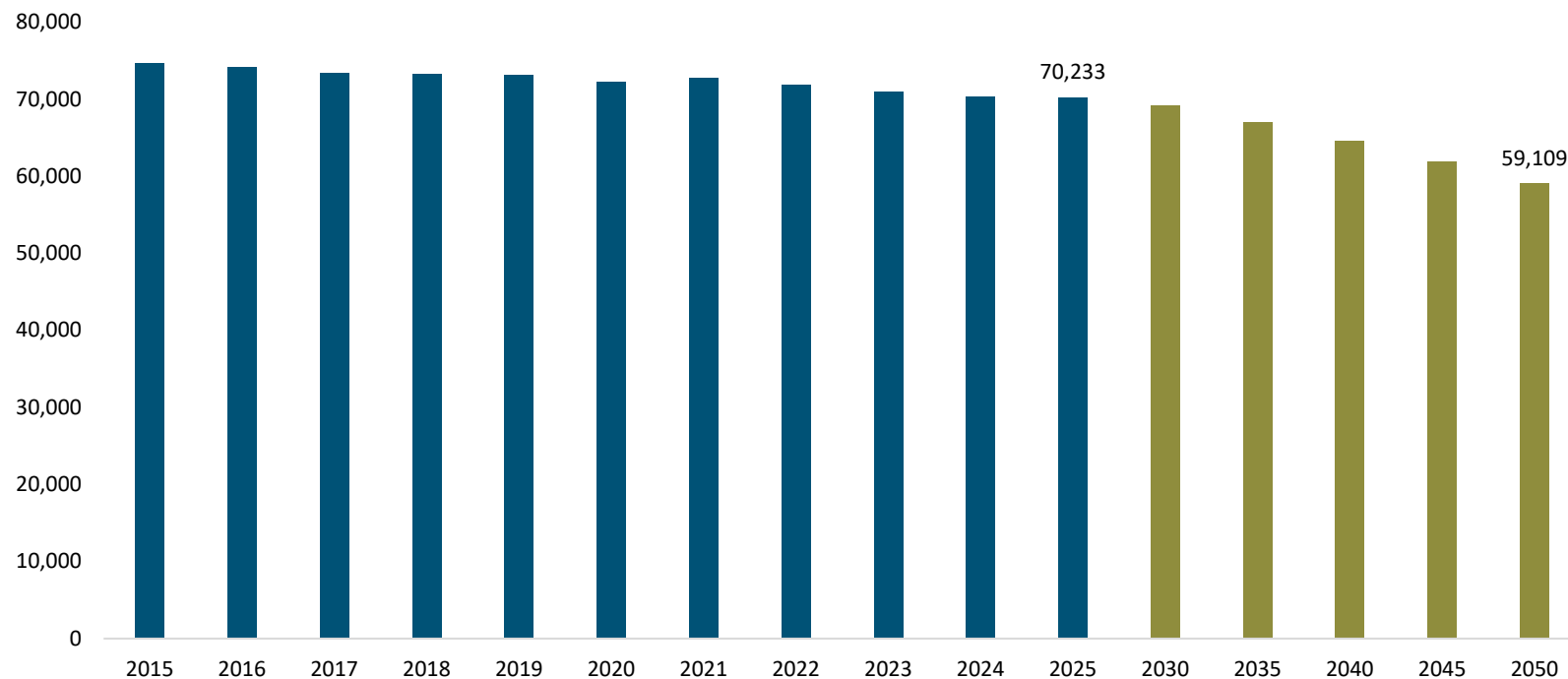




# SCENARIO C – POPULATION



Southeast Alaska Population Projections



# WAYS TO GET INVOLVED

Reach out to the Planning Team with any comments or concerns

- **Jill Melcher**  
DOT&PF Project Manager  
(907) 465-4445
  - **Renee Whitesell**  
DOWL Project Manager  
(907) 562-2000
  - **DOWL Public Involvement**  
(907) 562-2000
- ✉ **Email:** [SEATP@dowl.com](mailto:SEATP@dowl.com)
- 💻 **Website:** [www.southeastalaskatransportationplan.com](http://www.southeastalaskatransportationplan.com)

Keep an eye out for public meeting opportunities



For more information, scan the QR Code

